



ENGLISH

Nature Experience Trail Biological Diversity and Local History Kreba-Neudorf

Biosphärenreservat
Oberlausitzer Heide-
und Teichlandschaft



HAUS DER
TAUSEND
TEICHE

It's worth
taking a look!



Visiting this path has aroused your curiosity?
Then we recommend the Wartha Information Centre.
www.haus-der-tausend-teiche.de

Further information on the Federal Programme on Biological Diversity can be found at

www.bfn.de/en/topic/federal-biological-diversity-programme

If you'd like to know more about the trail, take a look at the booklet "Biologische Vielfalt und Heimatgeschichte" or at www.naturerlebnispfad-kreba-neudorf.de

Publisher: Municipality of Kreba-Neudorf, Am Sportpl. 8, 02906 Kreba-Neudorf, GER | Ph: +49-35893-6418 | Email: gemeinde@krebaneudorf.de | www.gemeinde-kreba-neudorf.de | Biosphärenreservatsverwaltung Oberlausitzer Heide- und Teichlandschaft, Warthaer Dorfstr. 29, 02694 Malschwitz – Wartha, GER | Ph: +49-35932 – 365-0 | Fax: +49-35932 – 365-50 | Email: brot.poststelle@smkul.sachsen.de | www.biosphaerenreservat-oberlausitz.de

Editors: Iutra - M. Striese, DLR Projektträger und Biosphärenreservatsverwaltung (BRV) | **Design and map:** arnolddesign.de | **Transition:** in-translation GmbH (UK) | **Illustrations:** Stefan Hanusch und Franziskus Lenke | **Photos:** Kramer Medien, B. Hering (BRV), S. Grau (Iutra), K. Roschik | **Printing:** Graphische Werkstätten Zittau GmbH

© 2022 Kreba-Neudorf, BRV Wartha
Funded in the Federal Programme on Biological Diversity by the Federal Agency for Nature Conservation with funds from the Federal Ministry for Environment, Nature Conservation, Nuclear Safety and Consumer Protection. (FKZ 3518685004)



April, 2022

The themed paths

Each themed path is represented by a historical figure who has shaped or continues to shape this habitat.



Find out which themed paths are on which circular trail, and what you can experience and learn there, by looking at the Pfad-Finder ('path-finders' to choose the paths of interest), which also are located at the entrances. All circular trails or loops have a short, medium and long route – so you can decide for yourself how many themed paths you want to visit and what distances you want to cover. There's much to learn from the information boards, wayside exhibits and activity stations. Rest areas invite you to linger, and pavilions offer a place to shelter if it rains.



Circular trail 1 consists of five different themed paths and connects the villages of Kreba and Neudorf. You can start from the entrances in Kreba or in Neudorf. It doesn't matter which direction you choose. The circular trail is signposted for both directions and can be explored in individual stages.



East of the Schöpsau

Kreba → Neudorf | 2,5 km | 1,5 mi | 1,5 h

Follow the hammer master around the shore of the Hammerteich pond and walk with him along the River Path and the natural forest boardwalk. Towards Neudorf, an old farmer's wife will tell you the history of the open country along the Field Path. And in Neudorf, the night watchman tells you about life in the small heathland village on the northern part of the Village Path.

West of the Schöpsau

Neudorf → Kreba | 3 km | 1.8 mi | 2 h

On the southern part of the Village Path, the night watchman tells you about wood as a raw material. This is also the subject of the subsequent Forest Path, where charcoal burners once worked. The trail continues along the Meadow Path where the stone diggers used to dig for a valuable mineral resource.



Circular trail 2 consists of three themed paths and leads through the Castle Park to the Kreba Ponds. There are entrances and parking at the water tower, the church and the Schmiedeweg (Forge Lane) in Kreba. The three themed paths can be explored individually or together in sequence.

Park Path

Kreba | 600 m | 0.4 mi | 15 min

You can stroll through the idyllic Kreba Castle Park in the footsteps of the landscape illustrator Heinrich Theodor Wehle.



River Path

Kreba | 150 m | 500 ft | 160 yd | 5 min

On the Schmiedeweg (Forge Lane) you will be guided by the hammer master to the new Schmiedebücke (Forge Bridge), which leads over the river Schwarzer Schöps.

Pond Path

Kreba Ponds | 2 km | 1.25 mi | 1 h

Those who still have time can let pond master Kintze guide them through the Kreba Ponds. The pond area is an oasis of peace where you can recharge your batteries.



Circular trail 3 is best explored by bike. It connects Kreba with the villages of Lache and Tschernske.

Kreba → Lache → Tschernske
5 km | 3.1 mi | 1h

The **cycle route** starts at the open-air inn 'Zur Krone', a playground and rest area for the whole family. From there, you can cycle at a leisurely pace to the pond Schwarze Lache, where the pond master reveals something about the peculiarities of Kreba fish farming. The trail then continues through fields and meadows to the two villages of Lache and Tschernske and then back to Kreba.

GPS coordinates (WGS84):
Schwarze Lache (pond): 51.348510° N, 14.705953° E
Tschernske: 51.357356° N, 14.692863° E



Getting around on two wheels

All themed paths except the Park Path and the natural forest boardwalk (cycling prohibited) can be explored by bike. There are bicycle parking spaces at all rest areas.

Directly connected to the nature trail are the Seeadler-Rundweg (White-tailed Eagle Circular Trail), the Neisseland and the Heidedörfer (Heath-Villages Tour) so that many different combinations are possible. A few kilometres to the north runs the Wolf Cycleway, which connects the Spree Cycleway in the west with the Neisse Cycleway (D12) in the east.



Getting around on four wheels

This is also no problem. All themed paths are suitable for prams and wheelchairs. Only the Forest Path is recommended exclusively for all-terrain buggies or wheelchairs. The information boards, activity stations and rest areas are also built in such a way that they can be used by people with reduced mobility.

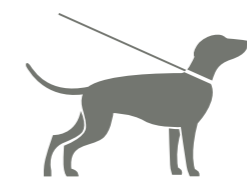


Getting around on four hooves

From up on a horse you see more than on foot or by bike. Please use the official riding trails. Stations 10 to 14 are located on the regional riding trail through Neudorf.

Getting around on four paws

You're welcome to bring your four-legged friend with you on the tour. Dogs should be kept on a leash on the nature trail.



Attention children!

One of us will be waiting for you at each station with exciting stories and puzzles in store for you. If you're quiet, you can hear or see us from the path. Maybe you'll also be able to follow our trails. But you'll definitely meet us as wooden figures along the path – to touch and pet.



Arriving by bus and train (public transport)

Kreba and Neudorf are served Mon–Fri by bus lines 105 (Niesky – Uhyst) and 255 (Niesky – Boxberg). There are stops in both districts (see map). There are connection and transfer options to Weisswasser, Rietschen and Rothenburg. You can also get to Mücka (2 km south of Neudorf) with bus 105 or 255 (direction Niesky), by bike or on foot. From there, you can take the disabled-accessible bus line 501 to/from Bautzen (Mon–Fri every 2 hours, and Sat) or the regional train RB64 (229) Hoyerswerda – Niesky – Görlitz (Mon–Sun every 2 hours).

Information / dial-a-bus:

ZVON: 0800-9866-4636
03591-326910 | www.zvon.de
Bus: RBO 03591-49 11 30 | 03591-49 11 00
www.regionalbus-oberlausitz.de
Rail: ODEG 030-51 48 88 88 8 |
03581 764 891-0 | www.odeg.de | www.bahn.de



Getting around in the vicinity

Inquisitive people can learn more about biodiversity and local history at the local history museum in Kreba (Hammerscheune) or at the school farm in Neudorf. Satisfy your curiosity in the region by visiting further exhibitions, open-air museums and adventure trails in the UNESCO Biosphere Reserve, the UNESCO Global Geopark and the UNESCO World Heritage Site Muskauer Park.

Addresses (in Germany)

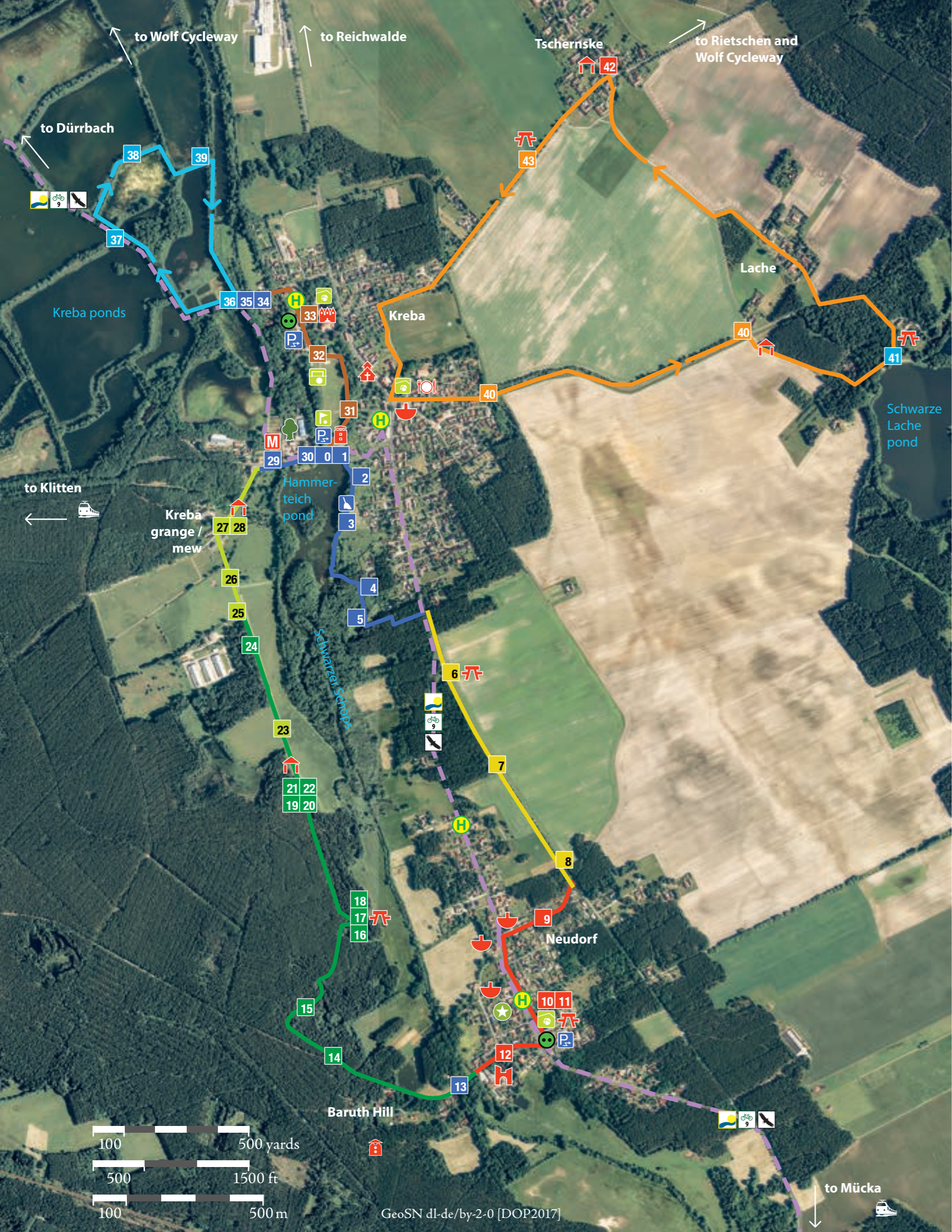
In 02906 Kreba-Neudorf:
► Hammerscheune Kreba | Hoyerswerdaer Str. 8e (under reconstruction)
► School Farm Neudorf with animal barn | farm shop and museum | Nieskyer Str. 26 | www.bauernhof-ladusch.de

In 02943 Boxberg – Nochten:
► Lausitzer Findlingspark | Parkstr. 7 | www.findlingspark-nochten.de

In 02956 Rietschen:
► Erlichthof | Turnerweg 6 | www.erlichthofsiedlung.de

In 02953 Bad Muskau:
► Fürst-Pückler-Park | www.muskauer-park.de

In 03159 Neiße-Malxetal – Klein Kötzig:
► Geopark Muskauer Faltenbogen | An der Ziegelei 1 | www.muskauer-faltenbogen.de



Legend

- | | | |
|------------------------------------|---------------------------------------|--------------------------|
| 14 36 station number | fi activity station | playground |
| River Path | rest area | sports field |
| Pond Path | shelter | mini golf |
| Meadow Path | bus stop | fishing waters |
| Forest Path | train station | water tower |
| Field Path | E-bike charging station | church |
| Village Path | parking area with charging station | castle |
| Park Path | parking area without charging station | local history museum |
| Cycle route | public WLAN (Wi-Fi) | ruined cardboard factory |
| White-tailed Eagle Circular Trail | protected site | fire watchtower |
| Seadler-Rundweg | school farm | shop |
| Neisseland and Heath Village Tours | nature reserve (maintenance zone) | open-air inn 'Zur Krone' |

Getting around on the themed paths

- 0 Entrance Kreba**
- 1 Water tower**

From here, you can start all three loop trails. The 'path-finder' helps you select the themed paths and the 'turn-style' familiarises you with the habitats.

Circular trail 1 station overview

- 2 Iron hammer**
- When and how was iron made in Kreba?
Who will manage to get the water wheel going?

- 3 Hammerteich pond**
- How was the Hammerteich pond created? Right by the water, you can relax or imitate the beats of the hammer mill on the wood chimes.

Along the

- 4 Natural forest boardwalk** you go past the shady alder swamp forest to the
- 5 Hammerbruch Forest** (wooded swamp), which provides moist, cool, fresh air, like a giant air conditioner. The River Path leads through the forest to the Field Path that begins at the southern end of Kreba.

- 6 Arable farming**
- Where has all the diversity gone? At the open country rest area, you can learn about the types of grain that once existed and the effects of agricultural transformation on native animals.

- 7 Open country**
- Where has the chequerboard gone? This station shows that a finer patchwork is not necessarily bad. More species could live in a more richly structured landscape.

- 8 Soil**
- Where has all the soil gone? Changes in use has led to incredible losses of soil. At the Windfege (wind sweeper), you can test for yourself how susceptible dry soil is!

- 9 Domestic animals**
- This station reveals the diversity on the farms and in the stables. Which domestic animal breeds live here and which wild species are they descended from? Find out with the help of the spinning or turning cubes.

- 10 Entrance Neudorf** and
- 11 Heathland village**
- are located at the Neudorf village green. Benches and small play areas invite you to linger. There is even something to browse in the bus shelter. The 'path-finder' and 'turn-style' help you choose the way.

- 12 Energy and raw materials**
- In the old cardboard factory, a long-forgotten material was produced from local raw materials. In the suitcase box you can see how it was made.

Across the bridge over the river

- 13 Schwarzer Schöps**
- the trail leads to the Forest Path. At the funnel-shaped listening tubes you'll hear the whispering brook louder than expected.



- 14 Forest conversion**
- Find out how a monoculture pine forest becomes a diverse mixed forest.

- 15 Dune and river floodplain**
- Hills of sand are a special feature of this area. The immediate proximity to the river in particular brings the kind of diversity seldom found anywhere else in such a confined space.

- 16 Old trees**
- Old and dead wood are important for a healthy forest. They provide habitats for specialised species and are living examples of the cycles in nature.

- 17 Deadwood**
- A deadwood trunk houses many inconspicuous species that live concealed on or in dying trees. Three cheers for the essential 'workers' of the forest!

- 18 Forest ecosystem**
- works like a gearbox. All the gears have to mesh to keep it going. Only then can it provide plants, animals and people with the basic necessities of life. Through the window at the rest area, you look out onto a forest island around which a branch of the Schwarze Schöps river once flowed.

- 19 Charcoal burning**
- At the charcoal kiln you'll learn how charcoal was traditionally made. The charcoal burner's hut still offers shelter from the wind today.

- 20 Forest utilisation**
- What else was extracted from the forest in the past besides wood and charcoal?

- 21 Plant litter use**
- Leaf and twig litter was also collected in the past. The consequences of this unsustainable practice can still be felt, many generations of foresters later.



- 22 Resin extraction**
- Pine trees were once veritable resin taps. Why was the sticky tree sap so sought after and what was it used for?

- 23 Meadowland**
- Species-rich grassland stretches between the forest and the river. Depending on the availability of water and nutrients, it differs in its mix of species.

- 24 Forest copses**
- In a species-rich forest, not only do different woody plants grow side by side – they also grow on top of one another in tiers. Light also plays a role here.

- 25 Cattle pastures**
- Grassland not only serves as hay meadow, but also as pasture. Wide-ranging grazing of light cattle breeds is compatible with nature and preserves habitats for many species in the open grasslands.

- 26 Bog iron ore**
- Here, you can read, see, feel and even sniff what this very special natural resource is all about.

- 27 Meadow orchard** and
- 28 Green classroom**
- The newly planted orchard presents the crème de la crème of historic apple, pear, cherry and plum varieties. Even the "Comtesse de Paris" can be admired here. A paradise for insects, for whom a special hotel was built here. And a paradise for those who appreciate sweet scents and flavours.

- 29 Ironworks**
- Where the hammer mill and later the ironworks once stood, the focus is on the processing of bog iron ore and its impact on the environment.

- Via the
- 30 Hammer weir** you return to the starting point and the Kreba water tower. The rivers were tamed and reshaped a long time ago. Only a few remnants of the river meadows remain. You won't believe the diversity of species that used to live in our rivers and floodplains.

Circular trail 2 station overview

- Take a walk with landscape illustrator Heinrich Theodor Wehle through Kreba's protected landscape and Castle Park.

- 31 Church**
- H. T. Wehle grew up in Kreba. As a pastor's son, he was able to develop all his talents. His favourite thing to draw was nature. During his travels through Europe, he developed into a significant artist of the early Romantic period. The church and vicarage are located directly east of the park. The short detour is worthwhile.

- 32 Castle**
- Surrounded by massive trees is the historic castle. Today it houses one of the most idyllic primary schools in Saxony and is an international village community centre.

- 33 Orangery**
- Subtropical woody plants used to overwinter here. They gave a Mediterranean flair to the castle grounds and provided exotic fruits to the aristocracy. The rear part of the palace park, the plant nursery and the palm house were abandoned after the Second World War. The orangery is to be saved.

- 34 Forge**
- For centuries, this heritage half-timbered house was the Kreba village smithy. But don't be fooled into thinking it's currently uninhabited! Old walls are also important habitats.

- Across the new
- 35 Forge bridge (Schmiedebrücke)** you'll step into another world. On the other side are the Kreba Ponds with the Pond Path.

- 36 Kreba Ponds**
- From one dam to the next and from pond to pond, lined with stately trees – these are the Kreba Ponds. They were built by pond master Kintze about 150 years ago.

- 37 Hadria- and Münsterteich ponds**
- Kintze modernised carp breeding by means of feeding and selective breeding, so that pond construction became worthwhile. Not only carp live in these shallow, warm waters – many other animals do too, from tiny plankton to sleek otters.

- 38 Ober- and Natiteich ponds**
- The Upper Pond (Oberteich) is a popular spot for a romantic sunset. If you're lucky, you may also see bats at dusk. And during the day, strange plants such as bladderwort can be found here.

- 39 Frauen- und Herrenteich ponds**
- The ponds aren't filled with water all year round. When they're not, plants that normally grow from the bottom of the ponds or from their banks sprout from the mud. Molluscs and even fish can also be hidden in the mud.

Circular trail 3 station overview

- From the Kreba entrance, it's best to make your way to the open air inn 'Krone'. From there, follow the penny-farthing cyclist to the green corridor at the edge of Kreba, heading toward Lache.

- 40 Green corridor** (without info board)
- The road from Kreba to Lache is lined by a hedge-row. Cyclists aren't the only ones who appreciate the wind protection in the open agricultural landscape. For animals, it's a green corridor, without which they couldn't safely cross the expansive fields. Shortly before reaching the village of Lache, a pavilion invites you to take a rest before continuing to the

- 41 Schwarze Lache**
- the oldest and largest pond on the trail. Its name means 'black or murky pool', which may not sound inviting, but it's one of the most valuable habitats and largest retreats for wildlife in the region.

- Cycle through the Lache district past the old Lache forester's house, and after about 1 km | 0.6 mi you reach

- 42 Colourful Tschernske**
- The small settlement around the former grange has spruced itself up. At the old firestation (Spritzenhaus), you'll find out what colourful gardens have to do with biodiversity and what the hummingbird hawk-moth is all about.

- 43 Flowering margins** (without info board)
- Cycle back to Kreba along a shady avenue. Vast fields and meadows stretch out on either side. In the future, flowering meadow and field margins will provide food and shelter for pollinators and other insects.

